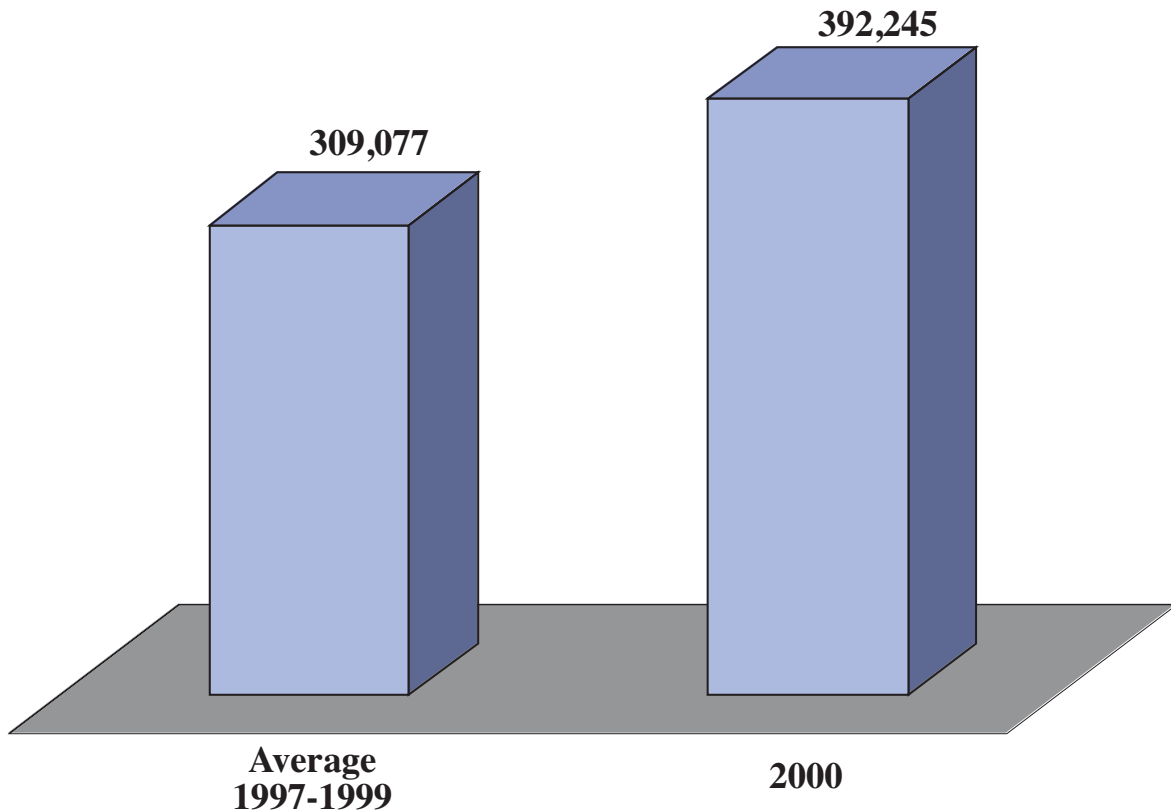


# The Facts About... Motor Vehicle Accidents in New York State

---

## Motor Vehicle Accidents in New York State



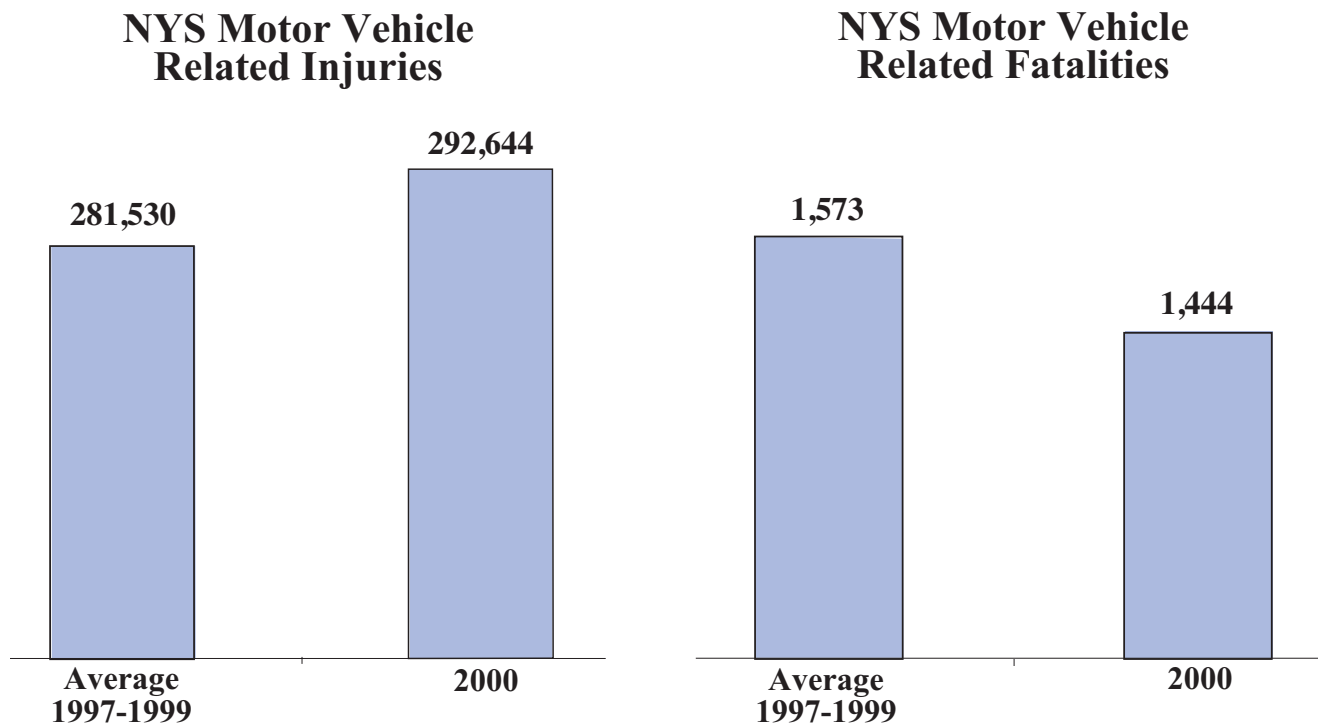
*Source: New York State Department of Motor Vehicles*

Motor-vehicle accidents in New York State are on the rise. Accidents rose approximately 27 percent in the year 2000 over the average annual figure from 1997 through 1999, according to the New York State Department of Motor Vehicles. Thirty percent of highway deaths in New York State involved occupants who were unrestrained. This was a greater factor than alcohol or excessive speed. Automobile crashes are the leading cause of teen death, according to the American Automobile Association of New York. Nearly 40 percent of all 16 year-olds have a serious crash before their 17th birthday.

Motor-vehicle related deaths and injuries cost the United States approximately \$150 billion in 1994 with medical expenses accounting for more than \$17 billion, according to The Centers for Disease Control and Prevention. More recent estimates could not be found. Inpatient hospital costs for unbelted crash victims are 50 percent higher than those for belted victims, according to the State Department of Motor Vehicles.

## The Facts About...

# Motor Vehicle Accidents in New York State



Source: *New York State Department of Motor Vehicles*

New York's highways saw an 8 percent decline in fatalities in the year 2000 compared to the average annual fatalities from 1997 to 1999, according to the New York State Department of Motor Vehicles. However, injuries are on the rise with an increase of about 4 percent in the year 2000. This data includes pedestrians, bicyclists, and all other non-vehicle involved persons as well as vehicle occupants regardless of seating position.



## How can motor-vehicle injuries and deaths be prevented?

According to a study by the Centers for Disease Control and Prevention:

- Child safety seats are 55%-75% effective in preventing deaths.
- Safety belts are 45%-60% effective in reducing moderate to critical injuries.
- The risk of fatal crash involvement increases as blood alcohol levels increase.

Source: *US Centers for Disease Control and Prevention*

According to the New York State Department of Health:

- Avoid drowsy driving.
- Don't drive aggressively.
- Drive cars equipped with airbags.

Source: *New York State Department of Health*